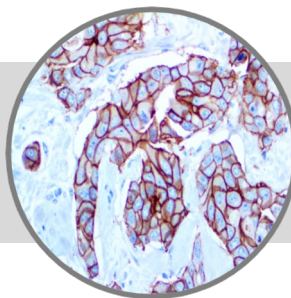


HER-2 neu, RMab

Clone: RBT-HER2**Rabbit Monoclonal****ASR**
Bio SB
 BIOSCIENCE FOR THE WORLD

www.biosb.com

Inset: IHC of HER-2 neu on a FFPE Breast Carcinoma Tissue

Intended Use

Analyte Specific Reagent.

Analytical and performance characteristics for HER-2 neu antibody, clone RBT-HER2, are not established.

Immunogen

Recombinant protein encoding extracellular domain of human HER-2 protein.

Summary and Explanation

HER-2 neu (also known as c-erbB-2) is a member of the epidermal growth factor receptor (EGFR) family and is notable for its role in the pathogenesis of breast cancer and as a target of treatment. It is a cell membrane surface-bound tyrosine kinase and is normally involved in the signal transduction pathways leading to cell growth and differentiation. HER-2 neu is a proto-oncogene located at the long arm of human chromosome 17(17q11.2-q12).

| | | | |
|---------------------------|-------------------|-------------------|------------------|
| Antibody Type | Rabbit Monoclonal | Clone | RBT-HER2 |
| Isotype | IgG | Reactivity | Paraffin, Frozen |
| Localization | Membranous | Control | Breast Carcinoma |
| Species Reactivity | | Human | |

Precautions

1. For professional users only. Results should be interpreted by a qualified medical professional.
2. This product contains <0.1% sodium azide (NaN₃) as a preservative. Ensure proper handling procedures are used with this reagent.
3. Always wear personal protective equipment such as laboratory coat, goggles and gloves when handling reagents.
4. Dispose of unused solution with copious amount of water.
5. Do not ingest reagent. If reagent is ingested, seek medical advice immediately.
6. Avoid contact with eyes. If contact occurs, flush with large quantities of water.
7. Follow safety precautions of the heating device used for epitope retrieval (TintoRetriever Pressure Cooker or similar).
8. For additional safety information refer to Safety Data Sheet for this product.
9. For complete recommendations for handling biological specimens, please refer to the CDC document, "Guidelines for Safe Work Practices in Human and Animal Medical Diagnostic Laboratories" (see References in this document).

Presentation

HER2/neu is a rabbit monoclonal antibody derived from cell culture supernatant that is concentrated, dialyzed, filter sterilized and diluted in buffer pH 7.5, containing BSA and sodium azide as a preservative.

| Catalog No. | Antibody Type | Dilution | Volume/Qty |
|--------------------|----------------------|-----------------|-------------------|
| BSB 2035 | Tinto Prediluted | Ready-to-Use | 3.0 mL |
| BSB 2036 | Tinto Prediluted | Ready-to-Use | 7.0 mL |
| BSB 2037 | Tinto Prediluted | Ready-to-Use | 15.0 mL |
| BSB 2038 | Concentrated | 1:100 - 1:500 | 0.1 mL |
| BSB 2039 | Concentrated | 1:100 - 1:500 | 0.5 mL |
| BSB 2040 | Concentrated | 1:100 - 1:500 | 1.0 mL |

Control Slides Available

| Catalog No. | Quantity |
|--------------------|-----------------|
| BSB 2041 | 5 slides |

Storage Store at 2-8°C (Control Slides: Store at 20-25°C)

Stability

This product is stable up to the expiration date on the product label. Do not use after expiration date listed on package label. Temperature fluctuations should be avoided. Store appropriately when not in use, and avoid prolonged exposure to room temperature conditions.

Specimen Preparation

Paraffin sections: The antibody can be used on formalin-fixed paraffin-embedded (FFPE) tissue sections. Ensure tissue undergoes appropriate fixation for best results. Pre-treatment of tissues with heat-induced epitope retrieval (HIER) is recommended using Bio SB ImmunoDNA Retriever with Citrate (BSB 0020-BSB 0023), ImmunoDNA Retriever with EDTA (BSB 0030-BSB 0033) or ImmunoDNA Digestor (BSB 0108-0112). See reverse side for complete protocol. Tissue should remain hydrated via use of Bio SB Immuno/DNA Washer solutions (BSB 0029 & BSB 0042).

Frozen sections and cell preparations: The antibody can be used for labeling acetone-fixed frozen sections and acetone-fixed cell preparations.

This Antibody has been quality control tested by immunohistochemistry as follows

Quality Control Procedure

| Step | ImmunoDetector AP/HRP | PolyDetector AP/HRP | PolyDetector Plus HRP |
|--------------------------|-----------------------|---------------------|-----------------------|
| Peroxidase/AP Blocker | 5 min. | 5 min. | 5 min. |
| Primary Antibody | 30-60 min. | 30-60 min. | 30-60 min. |
| 1st Step Detection | 10 min. | 30-45 min. | 15 min. |
| 2nd Step Detection | 10 min. | Not Applicable | 15 min. |
| Substrate-Chromogen | 5-10 min. | 5-10 min. | 5-10 min. |
| Counterstain / Coverslip | Varies | Varies | Varies |

References

1. Wright C, et al. Cancer Research. 1989;49:2087-90
2. Wright C, et al. British J Cancer. 1992;65:118-121
3. Slamon DJ, et al. Science. 1987;237:177-182
4. Jacobs TW, et al. Am J Clin Pathol. 2000;113:251-258
5. Gorlick R, et al. J Clin Oncol. 1999;17(9):2781-88
6. Keshgegian AA, et al. Am J Clin Pathol. 1997;Oct;108(4):456-63
7. U.S. Department of Health and Human Services: Centers for Disease Control and Prevention. Guidelines for Safe Work Practices in Human and Animal Medical Diagnostic Laboratories. Supplement / Vol. 61, January 6, 2012.

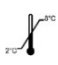





Mounting Protocols

For detailed instructions using biodegradable permanent mounting media such as XyGreen PermaMunter (BSB 0169-0174) or organic solvent based resin such as PermaMunter (BSB 0094-0097), refer to PI0174 or PI0097.

Product Limitations

Due to inherent variability present in immunohistochemical procedures (including fixation time of tissues, dilution factor of antibody, retrieval method utilized and incubation time), optimal performance should be established through the use of positive and negative controls. Results should be interpreted by a qualified medical professional.

Symbol Key / Légende des symboles/Erläuterung der Symbole

| | | | | | |
|---|--|---|--|--|---|
|  | Storage Temperature Limites de température Zulässiger Temperaturbereich |  | Manufacturer Fabricant Hersteller |  | Catalog Number Référence du catalogue Bestellnummer |
|  | Read Instructions for Use Consulter les instructions d'utilisation Gebrauchsanweisung beachten |  | Expiration Date Utiliser jusque Verwendbar bis |  | Lot Number Code du lot Chargenbezeichnung |

Bio SB
BIOSCIENCE FOR THE WORLD



69 Santa Felicia Dr., Santa Barbara, CA 93117, USA
Tel. (805) 692-2768 | Tel. (800) 561-1145 | Fax. (805) 692-2769
E-mail: sales@biosb.com | Website: www.biosb.com