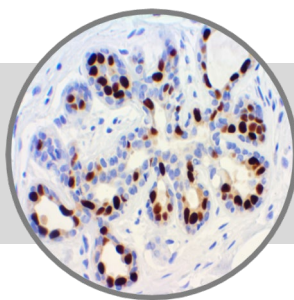


# Progesterone Receptor

Clone: BSB2

Mouse Monoclonal



ASR

**Bio SB**  
BIOSCIENCE FOR THE WORLD

www.biosb.com

*Inset: IHC of Progesterone Receptor on a FFPE Breast Carcinoma Tissue*

## Intended Use

Analyte Specific Reagent.

Analytical and performance characteristics for Progesterone Receptor antibody, clone BSB2, are not established.

## Immunogen

Recombinant human Progesterone Receptor protein.

## Summary and Explanation

The progesterone receptor (PR) also known as NR3C3 (nuclear receptor subfamily 3, group C, member 3), is an intracellular steroid receptor that specifically binds progesterone. PR is encoded by a single gene PGR residing on chromosome 11q22; it has two main forms, A and B, which differ in their molecular weight. Like all steroid receptors, the progesterone receptor has an amino and a carboxyl terminal, and between them the regulatory domain, a DNA binding domain, the hinge section, and the hormone binding domain.

<b>Antibody Type</b>	Mouse Monoclonal	<b>Clone</b>	BSB2
<b>Isotype</b>	IgG1	<b>Reactivity</b>	Paraffin, Frozen
<b>Localization</b>	Nuclear	<b>Control</b>	Breast, Myometrium, Cervix, Breast Carcinoma
<b>Species Reactivity</b>		Human	

## Precautions

1. For professional users only. Results should be interpreted by a qualified medical professional.
2. This product contains <0.1% sodium azide (NaN<sub>3</sub>) as a preservative. Ensure proper handling procedures are used with this reagent.
3. Always wear personal protective equipment such as laboratory coat, goggles and gloves when handling reagents.
4. Dispose of unused solution with copious amount of water.
5. Do not ingest reagent. If reagent is ingested, seek medical advice immediately.
6. Avoid contact with eyes. If contact occurs, flush with large quantities of water.
7. Follow safety precautions of the heating device used for epitope retrieval (TintoRetriever Pressure Cooker or similar).
8. For additional safety information refer to Safety Data Sheet for this product.
9. For complete recommendations for handling biological specimens, please refer to the CDC document, "Guidelines for Safe Work Practices in Human and Animal Medical Diagnostic Laboratories" (see References in this document).

## Presentation

Progesterone Receptor clone BSB2 is a mouse monoclonal antibody derived from cell culture supernatant that is concentrated, dialyzed, filter sterilized and diluted in buffer pH 7.5, containing BSA and sodium azide as a preservative.

<b>Catalog No.</b>	<b>Antibody Type</b>	<b>Dilution</b>	<b>Volume/Qty</b>
BSB 2126	Tinto Prediluted	Ready-to-Use	3.0 mL
BSB 2127	Tinto Prediluted	Ready-to-Use	7.0 mL
BSB 2128	Tinto Prediluted	Ready-to-Use	15.0 mL
BSB 2129	Concentrated	1:100 - 1:500	0.1 mL
BSB 2130	Concentrated	1:100 - 1:500	0.5 mL
BSB 2131	Concentrated	1:100 - 1:500	1.0 mL

## Control Slides Available

<b>Catalog No.</b>	<b>Quantity</b>
BSB 2132	5 slides

**Storage** Store at 2-8°C

## Stability

**This product is stable up to the expiration date on the product label.** Do not use after expiration date listed on package label. Temperature fluctuations should be avoided. Store appropriately when not in use, and avoid prolonged exposure to room temperature conditions.

## Specimen Preparation

**Paraffin sections:** The antibody can be used on formalin-fixed paraffin-embedded (FFPE) tissue sections. Ensure tissue undergoes appropriate fixation for best results. Pre-treatment of tissues with heat-induced epitope retrieval (HIER) is recommended using Bio SB ImmunoDNA Retriever with Citrate (BSB 0020-BSB 0023), ImmunoDNA Retriever with EDTA (BSB 0030-BSB 0033) or ImmunoDNA Digestor (BSB 0108-0112). See reverse side for complete protocol. Tissue should remain hydrated via use of Bio SB Immuno/DNA Washer solutions (BSB 0029 & BSB 0042).

**Frozen sections and cell preparations:** The antibody can be used for labeling acetone-fixed frozen sections and acetone-fixed cell preparations.

## This Antibody has been quality control tested by immunohistochemistry as follows

### Quality Control Procedure

Step	ImmunoDetector AP/HRP	PolyDetector AP/HRP	PolyDetector Plus HRP
Peroxidase/AP Blocker	5 min.	5 min.	5 min.
Primary Antibody	30-60 min.	30-60 min.	30-60 min.
1st Step Detection	10 min.	30-45 min.	15 min.
2nd Step Detection	10 min.	Not Applicable	15 min.
Substrate-Chromogen	5-10 min.	5-10 min.	5-10 min.
Counterstain / Coverslip	Varies	Varies	Varies

### Mounting Protocols

For detailed instructions using biodegradable permanent mounting media such as XyGreen PermaMunter (BSB 0169-0174) or organic solvent based resin such as PermaMunter (BSB 0094-0097), refer to PI0174 or PI0097.

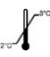



### Product Limitations

Due to inherent variability present in immunohistochemical procedures (including fixation time of tissues, dilution factor of antibody, retrieval method utilized and incubation time), optimal performance should be established through the use of positive and negative controls. Results should be interpreted by a qualified medical professional.

### References

1. Dabbs DJ, et al. Diagnostic Immunohistochemistry. 2002
2. Kell DL, et al. Applied Immunohistochemistry. 1993;1(4):275-81
3. Leong ASY, et al. Applied Immunohistochemistry. 1993;1(4):282-288
4. Tesch M, et al. Am J Clin Pathol. 1993;99:8-12
5. Clarke CL, et al. Endocrinology. 1987;121:1123-32
6. Feil PD, et al. Endocrinology. 1998;123: 2506-13
7. U.S. Department of Health and Human Services: Centers for Disease Control and Prevention. Guidelines for Safe Work Practices in Human and Animal Medical Diagnostic Laboratories. Supplement / Vol. 61, January 6, 2012.

### Symbol Key / Légende des symboles/Erläuterung der Symbole

	Storage Temperature Limites de température Zulässiger Temperaturbereich		Manufacturer Fabricant Hersteller	<b>REF</b>	Catalog Number Référence du catalogue Bestellnummer
	Read Instructions for Use Consulter les instructions d'utilisation Gebrauchsanweisung beachten		Expiration Date Utiliser jusqu'à Verwendbar bis	<b>LOT</b>	Lot Number Code du lot Chargenbezeichnung

**Bio SB**  
BIOSCIENCE FOR THE WORLD



69 Santa Felicia Dr., Santa Barbara, CA 93117, USA  
Tel. (805) 692-2768 | Tel. (800) 561-1145 | Fax. (805) 692-2769  
E-mail: sales@biosb.com | Website: www.biosb.com