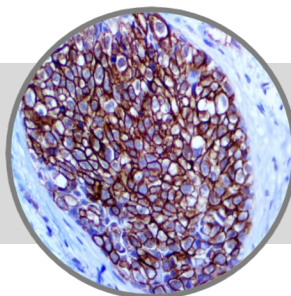


HER-2 neu Phospho, RMaB

Clone:EP123**Rabbit Monoclonal****RUO****Bio SB**
BIOSCIENCE FOR THE WORLD

www.biosb.com

Inset: IHC of HER-2 neu Phospho RMaB on a FFPE Breast Carcinoma Tissue

Intended Use

For Research Use Only.

This antibody is intended for use in Immunohistochemical applications on formalin-fixed paraffin-embedded tissues (FFPE), frozen tissue sections and cell preparations. Interpretation of results should be performed by a qualified medical professional.

* The HER-2 Phospho antibody, clone EP123, has been manufactured using Epitomics RabMaB® technology covered under Patent No.'s 5,675,063 and 7,402,409.

Immunogen

A synthetic peptide corresponding to residues surrounding tyrosine 877 of human HER2 protein.

Summary and Explanation

HER2 / ErbB2 is one of four members of the ErbB receptor family of transmembrane receptor-like tyrosine kinases. The kinase activity of ErbB2 can be activated without a ligand if it is overexpressed, and by association with other ErbB proteins. Autophosphorylation did not modulate receptor turnover. A Tyr→Phe substitution of ErbB2 Tyr-877 homologous to pp60c-src Tyr-416 did not alter ErbB2 biological and biochemical properties, thus excluding the possibility that phosphorylation of this residue, located in the kinase domain, modulates ErbB2 gp185 catalytic function.

HER2 is overexpressed in 25–30% of all breast cancers, including primary as well as metastatic breast tumors. HER2 has been widely investigated as a prognostic indicator. Detection of phosphorylated HER2 may aid in predicting breast cancer progression.

Antibody Type	Rabbit Monoclonal	Clone	EP123
Isotype	IgG	Reactivity	Paraffin, Frozen
Localization	Membranous	Control	Breast Carcinoma
Species Reactivity		Human	

Precautions

1. For professional users only. Results should be interpreted by a qualified medical professional.
2. This product contains <0.1% sodium azide (NaN₃) as a preservative. Ensure proper handling procedures are used with this reagent.
3. Always wear personal protective equipment such as laboratory coat, goggles and gloves when handling reagents.
4. Dispose of unused solution with copious amount of water.
5. Do not ingest reagent. If reagent is ingested, seek medical advice immediately.
6. Avoid contact with eyes. If contact occurs, flush with large quantities of water.
7. Follow safety precautions of the heating device used for epitope retrieval (TintoRetriever Pressure Cooker or similar).
8. For additional safety information refer to Safety Data Sheet for this product.
9. For complete recommendations for handling biological specimens, please refer to the CDC document, "Guidelines for Safe Work Practices in Human and Animal Medical Diagnostic Laboratories" (see References in this document).

Presentation

HER-2 neu phospho is a rabbit monoclonal antibody derived from cell culture supernatant that is concentrated, dialyzed, filter sterilized and diluted in buffer pH 7.5, containing BSA and sodium azide as a preservative.

Catalog No.	Antibody Type	Dilution	Volume/Qty
BSB 2503	Tinto Prediluted	Ready-to-Use	3.0 mL
BSB 2504	Tinto Prediluted	Ready-to-Use	7.0 mL
BSB 2505	Tinto Prediluted	Ready-to-Use	15.0 mL
BSB 2506	Concentrated	1:100 - 1:500	0.1 mL
BSB 2507	Concentrated	1:100 - 1:500	0.5 mL
BSB 2508	Concentrated	1:100 - 1:500	1.0 mL

Control Slides Available

Catalog No.	Quantity
BSB 2509	5 slides

Storage Store at 2–8°C

Stability

This product is stable up to the expiration date on the product label. Do not use after expiration date listed on package label. Temperature fluctuations should be avoided. Store appropriately when not in use, and avoid prolonged exposure to room temperature conditions.

Specimen Preparation

Paraffin sections: The antibody can be used on formalin-fixed paraffin-embedded (FFPE) tissue sections. Ensure tissue undergoes appropriate fixation for best results. Pre-treatment of tissues with heat-induced epitope retrieval (HIER) is recommended using Bio SB ImmunoDNA Retriever with Citrate (BSB 0020-BSB 0023), ImmunoDNA Retriever with EDTA (BSB 0030-BSB 0033) or ImmunoDNA Digestor (BSB 0108-0112). See reverse side for complete protocol. Tissue should remain hydrated via use of Bio SB Immuno/DNA Washer solutions (BSB 0029 & BSB 0042).

Frozen sections and cell preparations: The antibody can be used for labeling acetone-fixed frozen sections and acetone-fixed cell preparations.

Staining Procedure

1. Cut and mount 3-5-micron formalin-fixed paraffin-embedded tissues on positively charged slides such as Bio SB Hydrophilic Plus Slides (BSB 7028).
2. Air dry for 2 hours at 58° C.
3. Deparaffinize, dehydrate and rehydrate tissues.
4. Subject tissues to heat induced epitope retrieval (HIER) using a suitable retrieval solution such as ImmunoDNA Retriever with Citrate (BSB 0020-BSB 0023) or EDTA (BSB 0030-BSB 0033).
5. Any of three heating methods may be used:
 - a. TintoRetriever Pressure Cooker or Equivalent**
Place tissues/slides in a staining dish or coplin jar containing the ImmunoDNA Retriever with Citrate or EDTA, and place on trivet in the pressure cooker. Add 1-2 inches of distilled water to the pressure cooker and turn heat to high. Incubate for 15 minutes. Open and immediately transfer slides to room temperature.
 - b. TintoRetriever PT Module or Water Bath Method**
Place tissues/slides in a pre-warmed staining dish or coplin jar containing the ImmunoDNA Retriever with Citrate or EDTA at 95°-99° C. Incubate for 30-60 minutes.
 - c. Conventional Steamer Method**
Place tissues/slides in a pre-warmed staining dish or coplin jar containing the ImmunoDNA Retriever with Citrate or EDTA in a steamer, cover and steam for 30-60 minutes.
6. After heat treatment, transfer slides in ImmunoDNA Retriever with Citrate or EDTA to room temperature and let stand for 15-20 minutes.
7. For manual staining, perform antibody incubation at ambient temperature. For automated staining methods, perform antibody incubation according to instrument manufacturer's instructions.
8. Wash slides with ImmunoDNA washer or DI water.
9. Continue IHC staining protocol. Wash slides between each step with ImmunoDNA washer solution.

Mounting Protocols

For detailed instructions using biodegradable permanent mounting media such as XyGreen PermaMunter (BSB 0169-0174) or organic solvent based resin such as PermaMunter (BSB 0094-0097), refer to PI0174 or PI0097.

Product Limitations

Due to inherent variability present in immunohistochemical procedures (including fixation time of tissues, dilution factor of antibody, retrieval method utilized and incubation time), optimal performance should be established through the use of positive and negative controls. Results should be interpreted by a qualified medical professional.

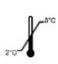



References

1. Wright C, et al. Cancer Research. 1989; 49:2087-90
1. Muthuswamy SK, et al.: Mol Cell Biol 1999, 19:6845-6857
2. Qian X, et al.: Proc Natl Acad Sci U S A 1994, 91:1500-1504
3. Dittadi R, et al.: J Natl Cancer Inst 2000, 92:1443-1444
4. Klapper LN, et al.: Cancer Res 2000, 60:3384-3388
5. Carlsson J, et al.: Br J Cancer 2004, 90:2344-2348
6. Hellstrom I, et al.: Cancer Res 2001, 61:2420-2423
7. Volpi A, et al.: J Clin Oncol 2003, 21:2708-2712
8. Thor AD, et al.: J Clin Oncol 2000, 18:3230-3239
9. U.S. Department of Health and Human Services: Centers for Disease Control and Prevention. Guidelines for Safe Work Practices in Human and Animal Medical Diagnostic Laboratories. Supplement / Vol. 61, January 6, 2012.

Abbreviated Immunohistochemical Protocol

Step	ImmunoDetector AP/HRP	PolyDetector AP/HRP	PolyDetector Plus HRP
Peroxidase/AP Blocker	5 min.	5 min.	5 min
Primary Antibody	30-60 min.	30-60 min.	30-60 min.
1st Step Detection	10 min.	30-45 min.	15 min.
2nd Step Detection	10 min.	Not Applicable	15 min.
Substrate-Chromogen	5-10 min.	5-10 min.	5-10 min.
Counterstain / Coverslip	Varies	Varies	Varies

Symbol Key / Légende des symboles/Erläuterung der Symbole

	Storage Temperature Limites de température Zulässiger Temperaturbereich		Manufacturer Fabricant Hersteller	REF	Catalog Number Référence du catalogue Bestellnummer
	Read Instructions for Use Consulter les instructions d'utilisation Gebrauchsanweisung beachten		Expiration Date Utiliser jusqu'à Verwendbar bis	LOT	Lot Number Code du lot Chargenbezeichnung



69 Santa Felicia Dr., Santa Barbara, CA 93117, USA
Tel. (805) 692-2768 | Tel. (800) 561-1145 | Fax. (805) 692-2769
E-mail: sales@biosb.com | Website: www.biosb.com