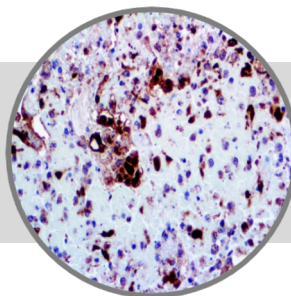


# Herpes Simplex Virus II, MAb

Clone: BSB-116

Mouse Monoclonal



ASR

**Bio SB**  
BIOSCIENCE FOR THE WORLD

www.biosb.com

*Inset: IHC of HSV II on a FFPE Infected Tissue*

## Intended Use

Analyte Specific Reagent.

Analytical and performance characteristics for Herpes Simplex Virus II, mouse monoclonal antibody, are not established.

## Immunogen

Recombinant protein directed against the major glycoproteins present in the viral envelope of HSV II.

## Summary and Explanation

Herpes Simplex Virus II typically involves the genitalia, and may also affect skin or internal organs such as brain, lung, liver, adrenal gland, or GI tract of immunocompromised individuals.

<b>Antibody Type</b>	Mouse Monoclonal	<b>Clone</b>	BSB-116
<b>Isotype</b>	IgG2a	<b>Reactivity</b>	Paraffin, Frozen
<b>Localization</b>	Nuclear, Cytoplasmic	<b>Control</b>	HSV II Infected Tissue
<b>Species Reactivity</b>		Human	

## Precautions

1. For professional users only. Results should be interpreted by a qualified medical professional.
2. This product contains <0.1% sodium azide (NaN<sub>3</sub>) as a preservative. Ensure proper handling procedures are used with reagent.
3. Always wear personal protective equipment such as laboratory coat, goggles, and gloves when handling reagents.
4. Dispose of unused solution according to local and federal regulations.
5. Do not ingest reagent. If reagent is ingested, seek medical advice immediately.
6. Avoid contact with eyes. If contact occurs, flush with large quantities of water.
7. Follow safety precautions of the heating device used for epitope retrieval (TintoRetriever Pressure Cooker or similar).
8. For additional safety information refer to Safety Data Sheet for this product.
9. For complete recommendations for handling biological specimens please refer to the CDC document, "Guidelines for Safe Work Practices in Human and Animal Medical Diagnostic Laboratories" (see References in this document).

## Presentation

Herpes Simplex Virus II is a mouse monoclonal antibody derived from cell culture supernatant that is concentrated, dialyzed, filter sterilized and diluted in buffer pH 7.5, containing BSA and sodium azide as a preservative.

<b>Catalog No.</b>	<b>Antibody Type</b>	<b>Dilution</b>	<b>Volume/Qty</b>
BSB 3462	Tinto Prediluted	Ready-to-Use	3.0 mL
BSB 3463	Tinto Prediluted	Ready-to-Use	7.0 mL
BSB 3464	Tinto Prediluted	Ready-to-Use	15.0 mL
BSB 3465	Concentrated	1:50 - 1:200	0.1 mL
BSB 3466	Concentrated	1:50 - 1:200	0.5 mL
BSB 3467	Concentrated	1:50 - 1:200	1.0 mL

**Storage** Store at 2-8°C

## Stability

**This product is stable up to the expiration date on the product label.** Do not use after expiration date listed on package label. Temperature fluctuations should be avoided. Store appropriately when not in use, and avoid prolonged exposure to room temperature conditions.

## Specimen for Quality Control Procedure

**Paraffin sections:** Formalin-fixed paraffin-embedded (FFPE) tissue sections should undergo appropriate fixation for best results. Pre-treatment of tissues with heat-induced epitope retrieval (HIER) is recommended using Bio SB ImmunoDNA Retriever with Citrate (BSB 0020-BSB 0023), ImmunoDNA Retriever with EDTA (BSB 0030-BSB 0033). Tissue should remain hydrated using Bio SB Immuno/DNA Washer solutions (BSB 0029 & BSB 0042).

**Frozen sections and cell preparations:** Acetone-fixed frozen sections and acetone-fixed cell preparations.

## This Antibody has been quality control tested by immunohistochemistry as follows

### Quality Control Procedure

Step	ImmunoDetector HRP/DAB	PolyDetector Plus HRP/DAB
Epitope Retrieval (HIER)	15 minutes	15 minutes
Peroxidase/AP Blocker	5 minutes	5 minutes
Primary Antibody	30-60 minutes	30-60 minutes
1st Step Detection	10 minutes	15 minutes
2nd Step Detection	10 minutes	15 minutes
Substrate-Chromogen	5-10 minutes	5-10 minutes
Counterstain	Varies	Varies

### Mounting Protocols

Tissues were mounted using biodegradable permanent mounting media such as XyGreen PermaMunter (BSB 0169-0174) or organic solvent based resin such as PermaMunter (BSB 0094-0097).

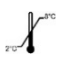



### Product Limitations

Due to inherent variability present in immunohistochemical procedures (including fixation time of tissues, dilution factor of antibody, retrieval method utilized and incubation time), optimal performance should be established through the use of positive and negative controls. Results should be interpreted by a qualified medical professional.

### References

1. Adams RL, et al. J Pathol. 1984; 143:241-7
2. Vago L, et al. Acta Neuropathol (Berl). 1996 Oct; 92(4):404-8
3. Shintaku M, et al. Arch Pathol Lab Med. 2003 Feb; 127(2):231-4
4. U.S. Department of Health and Human Services: Centers for Disease Control and Prevention. Guidelines for Safe Work Practices in Human and Animal Medical Diagnostic Laboratories. Supplement / Vol. 61, January 6, 2012.

### Symbol Key / Légende des symboles/Erläuterung der Symbole

	Storage Temperature Limites de température Zulässiger Temperaturbereich		Manufacturer Fabricant Hersteller	<b>REF</b>	Catalog Number Référence du catalogue Bestellnummer
	Read Instructions for Use Consulter les instructions d'utilisation Gebrauchsanweisung beachten		Expiration Date Utiliser jusqu'à Verwendbar bis	<b>LOT</b>	Lot Number Code du lot Chargenbezeichnung



69 Santa Felicia Dr., Santa Barbara, CA 93117, USA  
Tel. (805) 692-2768 | Tel. (800) 561-1145 | Fax. (805) 692-2769  
E-mail: sales@biosb.com | Website: www.biosb.com