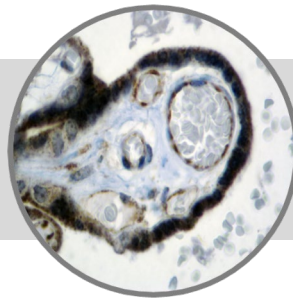


VEGF, RMAb

Clone: RBT-VEGF
Rabbit Monoclonal

**ASR****Bio SB**
BIOSCIENCE FOR THE WORLD

www.biosb.com

Inset: IHC of VEGF on a FFPE Placenta Tissue

Intended Use

Analyte Specific Reagent.

Analytical and performance characteristics for Varicella Zoster Virus antibody, clone RBT-VEGF, are not established.

Immunogen

Recombinant human vascular endothelial growth factor protein.

Summary and Explanation

Vascular endothelial growth factor (VEGF) is an important signaling protein involved in both vasculogenesis (the de novo formation of the embryonic circulatory system) and angiogenesis (the growth of blood vessels from pre-existing vasculature). As its name implies, VEGF activity is restricted mainly to cells of the vascular endothelium, although it has an effect on a limited number of other cell types (e.g., stimulation monocyte/macrophage migration).

VEGF has been implicated with poor prognosis in breast cancer. The overexpression of VEGF may be an early step in the process of metastasis, a step involved in the "angiogenic" switch. Although VEGF has been correlated with poor survival, its exact mechanism of action in the progression of tumors remains unclear. VEGF is also released in rheumatoid arthritis in response to TNF-alpha, increasing endothelial permeability and swelling and also stimulating angiogenesis (formation of capillaries). Once released, VEGF may elicit several responses. It may cause a cell to survive, move, or further differentiate.

Antibody Type	Rabbit Monoclonal	Clone	RBT-VEGF
Isotype	IgG	Reactivity	Paraffin, Frozen
Localization	Cytoplasmic, Cell Surface	Control	Placenta, Angiosarcoma, Angioma
Species Reactivity		Human	

Precautions

1. For professional users only. Results should be interpreted by a qualified medical professional.
2. This product contains <0.1% sodium azide (NaN₃) as a preservative. Ensure proper handling procedures are used with this reagent.
3. Always wear personal protective equipment such as laboratory coat, goggles and gloves when handling reagents.
4. Dispose of unused solution with copious amount of water.
5. Do not ingest reagent. If reagent is ingested, seek medical advice immediately.
6. Avoid contact with eyes. If contact occurs, flush with large quantities of water.
7. Follow safety precautions of the heating device used for epitope retrieval (TintoRetriever Pressure Cooker or similar).
8. For additional safety information refer to Safety Data Sheet for this product.
9. For complete recommendations for handling biological specimens, please refer to the CDC document, "Guidelines for Safe Work Practices in Human and Animal Medical Diagnostic Laboratories" (see References in this document).

Presentation

VEGF is a rabbit monoclonal antibody derived from cell culture supernatant that is concentrated, dialyzed, filter sterilized and diluted in buffer pH 7.5, containing BSA and sodium azide as a preservative.

Catalog No.	Antibody Type	Dilution	Volume/Qty
BSB 6050	Tinto Prediluted	Ready-to-Use	3.0 mL
BSB 6051	Tinto Prediluted	Ready-to-Use	7.0 mL
BSB 6052	Tinto Prediluted	Ready-to-Use	15.0 mL
BSB 6053	Concentrated	1:10 - 1:50	0.1 mL
BSB 6054	Concentrated	1:10 - 1:50	0.5 mL
BSB 6055	Concentrated	1:10 - 1:50	1.0 mL

Control Slides Available

Catalog No.	Quantity
BSB 6056	5 slides

Storage Store at 2-8°C

Stability

This product is stable up to the expiration date on the product label. Do not use after expiration date listed on package label. Temperature fluctuations should be avoided. Store appropriately when not in use, and avoid prolonged exposure to room temperature conditions.

Specimen Preparation

Paraffin sections: The antibody can be used on formalin-fixed paraffin-embedded (FFPE) tissue sections. Ensure tissue undergoes appropriate fixation for best results. Pre-treatment of tissues with heat-induced epitope retrieval (HIER) is recommended using Bio SB ImmunoDNA Retriever with Citrate (BSB 0020-BSB 0023), ImmunoDNA Retriever with EDTA (BSB 0030-BSB 0033) or ImmunoDNA Digestor (BSB 0108-0112). See reverse side for complete protocol. Tissue should remain hydrated via use of Bio SB Immuno/DNA Washer solutions (BSB 0029 & BSB 0042).

Frozen sections and cell preparations: The antibody can be used for labeling acetone-fixed frozen sections and acetone-fixed cell preparations.

This Antibody has been quality control tested by immunohistochemistry as follows

Quality Control Procedure

Step	ImmunoDetector AP/HRP	PolyDetector AP/HRP	PolyDetector Plus HRP
Peroxidase/AP Blocker	5 min.	5 min.	5 min
Primary Antibody	30-60 min.	30-60 min.	30-60 min.
1st Step Detection	10 min.	30-45 min.	15 min.
2nd Step Detection	10 min.	Not Applicable	15 min.
Substrate-Chromogen	5-10 min.	5-10 min.	5-10 min.
Counterstain / Coverslip	Varies	Varies	Varies

Mounting Protocols

For detailed instructions using biodegradable permanent mounting media such as XyGreen PermaMunter (BSB 0169-0174) or organic solvent based resin such as PermaMunter (BSB 0094-0097), refer to PI0174 or PI0097.

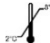



Product Limitations

Due to inherent variability present in immunohistochemical procedures (including fixation time of tissues, dilution factor of antibody, retrieval method utilized and incubation time), optimal performance should be established through the use of positive and negative controls. Results should be interpreted by a qualified medical professional.

References

1. Van der Loos, et. al. VEGF Antibody Selection for IHC. J Histochem Cytochem. 2010, 58 (2): 109-118.
2. Chaudhry IH, et. al. Vascular endothelial growth factor expression correlates with tumour grade and vascularity in gliomas. Histopathology, 2001, 91:409-415
3. Ferrara N, Gerber H-P, LeCouter J. The biology of VEGF and its receptors. Nat Med 2003, 9:669-676
4. U.S. Department of Health and Human Services: Centers for Disease Control and Prevention. Guidelines for Safe Work Practices in Human and Animal Medical Diagnostic Laboratories. Supplement / Vol. 61, January 6, 2012.

Symbol Key / Légende des symboles/Erläuterung der Symbole

	Storage Temperature Limites de température Zulässiger Temperaturbereich		Manufacturer Fabricant Hersteller	REF	Catalog Number Référence du catalogue Bestellnummer
	Read Instructions for Use Consulter les instructions d'utilisation Gebrauchsanweisung beachten		Expiration Date Utiliser jusque Verwendbar bis	LOT	Lot Number Code du lot Chargenbezeichnung

Bio SB
BIOSCIENCE FOR THE WORLD



69 Santa Felicia Dr., Santa Barbara, CA 93117, USA
Tel. (805) 692-2768 | Tel. (800) 561-1145 | Fax. (805) 692-2769
E-mail: sales@biosb.com | Website: www.biosb.com