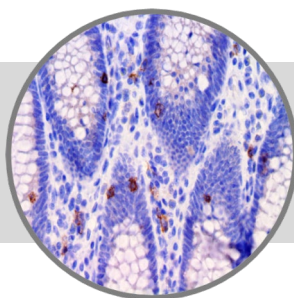


CD105/Endoglin

Clone: Polyclonal
Rabbit Polyclonal



RUO

Bio SB
BIOSCIENCE FOR THE WORLD

www.biosb.com

Inset: IHC of CD105 on a FFPE Placenta Tissue

Intended Use

For Research Use Only.

This antibody is intended for use in Immunohistochemical applications on formalin-fixed paraffin-embedded tissues (FFPE), frozen tissue sections and cell preparations. Interpretation of results should be performed by a qualified medical professional.

Immunogen

Synthetic KLH conjugated peptide between 380-409 amino acids from the central region of human CD105.

Summary and Explanation

CD105/Endoglin is a Type I membrane glycoprotein located on cell surfaces and is part of the TGF beta receptor complex. This protein has been found on endothelial cells, activated macrophages, fibroblasts, and smooth-muscle cells. Endoglin has a role in the development of the cardiovascular system and in vascular remodeling. Its expression is regulated during heart development. In humans, Endoglin may be involved in the autosomal dominant disorder known as Hereditary Hemorrhagic Telangiectasia Type 1.

CD105 is highly expressed in endothelial cells during tumor angiogenesis and inflammation, with weak or negative expression in vascular endothelium of normal tissues. Angiogenesis is controlled by angiogenic factors, mostly secreted by tumor cells. Vascular Endothelial Growth Factor (VEGF) is a potent angiogenic growth factor that stimulates endothelial cell proliferation and induces microvessel permeability. Studies have demonstrated a correlation between VEGF expression and vascular density. Angiogenesis has been proposed as a promising prognostic marker in a variety of tumors. Most studies of angiogenesis have been done with pan-endothelial markers such as CD31 or CD34. Endoglin is a more specific and sensitive marker for tumor angiogenesis than CD31, as it labels only newly-formed blood vessels and may serve as a prognostic marker for Prostate Adenocarcinoma, and cancers of the lung, stomach, breast, and brain. CD105 may serve as a target for anti-angiogenesis therapy.

Antibody Type	Rabbit Polyclonal	Clone	Polyclonal
Isotype	IgG	Reactivity	Paraffin, Frozen
Localization	Cytoplasmic	Control	Tonsil, Neoplastic, Granulation Tissue, Renal Cell Carcinoma
Species Reactivity		Human, Mouse	

Presentation

CD105/Endoglin is a purified immunoglobulin fraction of rabbit antiserum that is filter sterilized and diluted in buffer pH 7.5, containing BSA and sodium azide as a preservative.

<i>Catalog No.</i>	<i>Antibody Type</i>	<i>Dilution</i>	<i>Volume/Qty</i>
BSB 6261	Tinto Prediluted	Ready-to-Use	3.0 mL
BSB 6262	Tinto Prediluted	Ready-to-Use	7.0 mL
BSB 6263	Tinto Prediluted	Ready-to-Use	15.0 mL
BSB 6264	Concentrated	1:25 - 1:100	0.1 mL
BSB 6265	Concentrated	1:25 - 1:100	0.5 mL
BSB 6266	Concentrated	1:25 - 1:100	1.0 mL

Control Slides Available

<i>Catalog No.</i>	<i>Quantity</i>
BSB 6267	5 slides

Storage Store at 2-8°C (Control Slides: Store at 20-25°C)

Precautions

1. For professional users only. Results should be interpreted by a qualified medical professional.
2. This product contains <0.1% sodium azide (NaN₃) as a preservative. Ensure proper handling procedures are used with this reagent.
3. Always wear personal protective equipment such as laboratory coat, goggles and gloves when handling reagents.
4. Dispose of unused solution with copious amount of water.
5. Do not ingest reagent. If reagent is ingested, seek medical advice immediately.
6. Avoid contact with eyes. If contact occurs, flush with large quantities of water.
7. Follow safety precautions of the heating device used for epitope retrieval (TintoRetriever Pressure Cooker or similar).
8. For additional safety information refer to Safety Data Sheet for this product.
9. For complete recommendations for handling biological specimens, please refer to the CDC document, "Guidelines for Safe Work Practices in Human and Animal Medical Diagnostic Laboratories" (see References in this document).

Stability

This product is stable up to the expiration date on the product label. Do not use after expiration date listed on package label. Temperature fluctuations should be avoided. Store appropriately when not in use, and avoid prolonged exposure to room temperature conditions.

Specimen Preparation

Paraffin sections: The antibody can be used on formalin-fixed paraffin-embedded (FFPE) tissue sections. Ensure tissue undergoes appropriate fixation for best results. Pre-treatment of tissues with heat-induced epitope retrieval (HIER) is recommended using Bio SB ImmunoDNA Retriever with Citrate (BSB 0020-BSB 0023), ImmunoDNA Retriever with EDTA (BSB 0030-BSB 0033) or ImmunoDNA Digestor (BSB 0108-0112). See reverse side for complete protocol. Tissue should remain hydrated via use of Bio SB Immuno/DNA Washer solutions (BSB 0029 & BSB 0042).

Frozen sections and cell preparations: The antibody can be used for labeling acetone-fixed frozen sections and acetone-fixed cell preparations.

Staining Procedure

1. Cut and mount 3-5 micron formalin-fixed paraffin-embedded tissues on positively charged slides such as Bio SB Hydrophilic Plus Slides (BSB 7028).
2. Air dry for 2 hours at 58° C.
3. Deparaffinize, dehydrate and rehydrate tissues.
4. Subject tissues to heat induced epitope retrieval (HIER) using a suitable retrieval solution such as ImmunoDNA Retriever with Citrate (BSB 0020-BSB 0023) or EDTA (BSB 0030-BSB 0033).
5. Any of three heating methods may be used:

a. TintoRetriever Pressure Cooker or Equivalent

Place tissues/slides in a staining dish or coplin jar containing the ImmunoDNA Retriever with Citrate or EDTA, and place on trivet in the pressure cooker. Add 1-2 inches of distilled water to the pressure cooker and turn heat to high. Incubate for 15 minutes. Open and immediately transfer slides to room temperature.

b. TintoRetriever PT Module or Water Bath Method

Place tissues/slides in a pre-warmed staining dish or coplin jar containing the ImmunoDNA Retriever with Citrate or EDTA at 95°-99° C. Incubate for 30-60 minutes.

c. Conventional Steamer Method

Place tissues/slides in a pre-warmed staining dish or coplin jar containing the ImmunoDNA Retriever with Citrate or EDTA in a steamer, cover and steam for 30-60 minutes.

6. After heat treatment, transfer slides in ImmunoDNA Retriever with Citrate or EDTA to room temperature and let stand for 15-20 minutes.
7. For manual staining, perform antibody incubation at ambient temperature. For automated staining methods, perform antibody incubation according to instrument manufacturer's instructions.
8. Wash slides with ImmunoDNA washer or DI water.
9. Continue IHC staining protocol. Wash slides between each step with ImmunoDNA washer solution.

Abbreviated Immunohistochemical Protocol

Step	ImmunoDetector AP/HRP	PolyDetector AP/HRP	PolyDetector Plus HRP
Peroxidase/AP Blocker	5 min.	5 min.	5 min
Primary Antibody	30-60 min.	30-60 min.	30-60 min.
1st Step Detection	10 min.	30-45 min.	15 min.
2nd Step Detection	10 min.	Not Applicable	15 min.
Substrate-Chromogen	5-10 min.	5-10 min.	5-10 min.
Counterstain / Coverslip	Varies	Varies	Varies

Mounting Protocols

For detailed instructions using biodegradable permanent mounting media such as XyGreen PermaMunter (BSB 0169-0174) or organic solvent based resin such as PermaMunter (BSB 0094-0097), refer to PI0174 or PI0097.

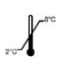



Product Limitations

Due to inherent variability present in immunohistochemical procedures (including fixation time of tissues, dilution factor of antibody, retrieval method utilized and incubation time), optimal performance should be established through the use of positive and negative controls. Results should be interpreted by a qualified medical professional.

References

1. Barresi V, et al. Acta Neuropathol. 2007;114 (2):147-56
2. Cimpean AM, et al. Rom J Morphol Embryol. 2007;48 (1):41-5
3. El-Gohary YM, et al. Am J Clin Pathol. 2007;127(4):572-9
4. Kyzas PA, et al. Virchows Arch. 2006;448(6):768-75
5. U.S. Department of Health and Human Services: Centers for Disease Control and Prevention. Guidelines for Safe Work Practices in Human and Animal Medical Diagnostic Laboratories. Supplement / Vol. 61, January 6, 2012.

Symbol Key / Légende des symboles/Erläuterung der Symbole

	Storage Temperature Limites de température Zulässiger Temperaturbereich		Manufacturer Fabricant Hersteller	REF	Catalog Number Référence du catalogue Bestellnummer
	Read Instructions for Use Consulter les instructions d'utilisation Gebrauchsanweisung beachten		Expiration Date Utiliser jusque Verwendbar bis	LOT	Lot Number Code du lot Chargenbezeichnung

