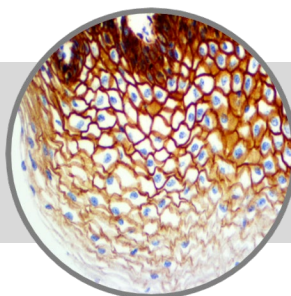


# EGFR Phospho, RMab

**Clone: EP11**

Rabbit Monoclonal

**ASR**
**Bio SB**  
 BIOSCIENCE FOR THE WORLD

www.biosb.com

*Inset: IHC of EGFR Phospho on FFPE Cervix Tissue*

## Intended Use

Analyte Specific Reagent.

Analytical and performance characteristics for EGFR Phospho antibody, clone EP11, are not established.

\* The EGFR antibody, clone EP11, has been manufactured using Epitomics RabMab® technology covered under Patent No.'s 5,675,063 and 7,402,409.

## Immunogen

Synthetic peptide corresponding to residues surrounding Tyr1068 of human EGF receptor protein.

## Summary and Explanation

Epidermal Growth Factor Receptor (EGFR) is the receptor for epidermal growth factor (EGF). It is a member of the ErbB family receptors, a subfamily of four closely related receptor tyrosine kinases: EGFR (ErbB-1), HER-2 neu (ErbB-2), HER-3 (ErbB-3) and HER-4 (ErbB-4).

<b>Antibody Type</b>	Rabbit Monoclonal	<b>Clone</b>	EP11
<b>Isotype</b>	IgG	<b>Reactivity</b>	Paraffin, Frozen
<b>Localization</b>	Membranous	<b>Control</b>	Skin, Placenta, Testis, Tonsil, Pancreas, Squamous Cell Carcinoma
<b>Species Reactivity</b>		Human, Predicted: Mouse	

## Precautions

1. For professional users only. Results should be interpreted by a qualified medical professional.
2. This product contains <0.1% sodium azide (NaN<sub>3</sub>) as a preservative. Ensure proper handling procedures are used with this reagent.
3. Always wear personal protective equipment such as laboratory coat, goggles and gloves when handling reagents.
4. Dispose of unused solution with copious amount of water.
5. Do not ingest reagent. If reagent is ingested, seek medical advice immediately.
6. Avoid contact with eyes. If contact occurs, flush with large quantities of water.
7. Follow safety precautions of the heating device used for epitope retrieval (TintoRetriever Pressure Cooker or similar).
8. For additional safety information refer to Safety Data Sheet for this product.
9. For complete recommendations for handling biological specimens, please refer to the CDC document, "Guidelines for Safe Work Practices in Human and Animal Medical Diagnostic Laboratories" (see References in this document).

## Presentation

EGFR is a rabbit monoclonal antibody derived from cell culture supernatant that is concentrated, dialyzed, filter sterilized and diluted in buffer pH 7.5, containing BSA and sodium azide as a preservative.

<b>Catalog No.</b>	<b>Antibody Type</b>	<b>Dilution</b>	<b>Volume/Qty</b>
BSB 6716	Tinto Prediluted	Ready-to-Use	3.0 mL
BSB 6717	Tinto Prediluted	Ready-to-Use	7.0 mL
BSB 6718	Tinto Prediluted	Ready-to-Use	15.0 mL
BSB 6719	Concentrated	1:25 - 1:100	0.1 mL
BSB 6720	Concentrated	1:25 - 1:100	0.5 mL
BSB 6721	Concentrated	1:25 - 1:100	1.0 mL

## Control Slides Available

<b>Catalog No.</b>	<b>Quantity</b>
BSB 6722	5 slides

## Storage

Store at 2-8°C

## Stability

**This product is stable up to the expiration date on the product label.** Do not use after expiration date listed on package label. Temperature fluctuations should be avoided. Store appropriately when not in use, and avoid prolonged exposure to room temperature conditions.

## Specimen Preparation

**Paraffin sections:** The antibody can be used on formalin-fixed paraffin-embedded (FFPE) tissue sections. Ensure tissue undergoes appropriate fixation for best results. Pre-treatment of tissues using Bio SB ImmunoDNA Digestor (BSB 0108-0112). See reverse side for complete protocol. Tissue should remain hydrated via use of Bio SB Immuno/DNA Washer solutions (BSB 0029 & BSB 0042).

**Frozen sections and cell preparations:** The antibody can be used for labeling acetone-fixed frozen sections and acetone-fixed cell preparations.

## This Antibody has been quality control tested by immunohistochemistry as follows

### Quality Control Procedure

Step	ImmunoDetector AP/HRP	PolyDetector AP/HRP	PolyDetector Plus HRP
Proteinase K	5-10 min.	5-10 min.	5-10 min.
Peroxidase/AP Blocker	5 min.	5 min.	5 min.
Primary Antibody	30-60 min.	30-60 min.	30-60 min.
1st Step Detection	10 min.	30-45 min.	15 min.
2nd Step Detection	10 min.	Not Applicable	15 min.
Substrate-Chromogen	5-10 min.	5-10 min.	5-10 min.
Counterstain / Coverslip	Varies	Varies	Varies

### References

1. Hunter T: Nature 1984, 311:414-416
2. Reynolds FH, Jr., et al.: Nature 1981, 292:259-262
3. Helin K, et al.: Oncogene 1991, 6:825-832
4. Christensen ME: Dan Med Bull 1998, 45:121-134
5. Kanematsu T, et al.: Oncol Res 2003, 13:289-298
6. Magkou C, et al.: Breast Cancer Res 2008, 10: R49
7. U.S. Department of Health and Human Services: Centers for Disease Control and Prevention. Guidelines for Safe Work Practices in Human and Animal Medical Diagnostic Laboratories. Supplement / Vol. 61, January 6, 2012.

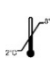



### Mounting Protocols

For detailed instructions using biodegradable permanent mounting media such as XyGreen PermaMunter (BSB 0169-0174) or organic solvent based resin such as PermaMunter (BSB 0094-0097), refer to PI0174 or PI0097.

### Product Limitations

Due to inherent variability present in immunohistochemical procedures (including fixation time of tissues, dilution factor of antibody, retrieval method utilized and incubation time), optimal performance should be established through the use of positive and negative controls. Results should be interpreted by a qualified medical professional.

### Symbol Key / Légende des symboles/Erläuterung der Symbole

	Storage Temperature Limites de température Zulässiger Temperaturbereich		Manufacturer Fabricant Hersteller	<b>REF</b>	Catalog Number Référence du catalogue Bestellnummer
	Read Instructions for Use Consulter les instructions d'utilisation Gebrauchsanweisung beachten		Expiration Date Utiliser jusqu'à Verwendbar bis	<b>LOT</b>	Lot Number Code du lot Chargenbezeichnung



69 Santa Felicia Dr., Santa Barbara, CA 93117, USA  
Tel. (805) 692-2768 | Tel. (800) 561-1145 | Fax. (805) 692-2769  
E-mail: sales@biosb.com | Website: www.biosb.com